

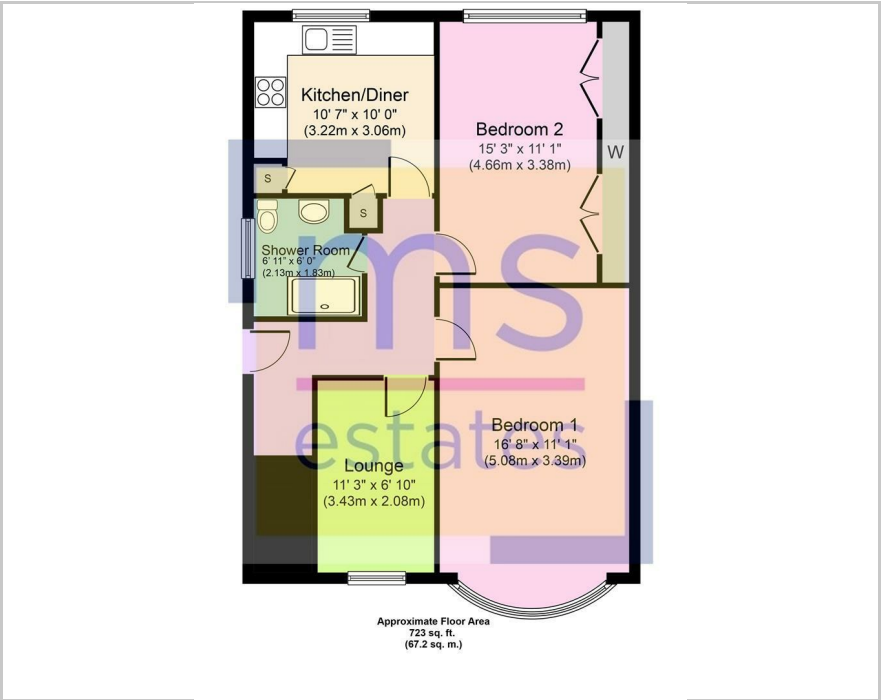


386 Derby Road, Nottingham, NG7 2DX

£260 Per Week



Floor Plan



Area Map



- STUDENT ACCOMMODATION
- Spacious ground floor maisonette
- 2 Double bedrooms
- New bathroom coming Summer 2026
- Well presented throughout
- Communal garden
- Off-road parking for one car
- Opposite Lenton Park
- Excellent location
- Close to QMC & Jubilee Campus

Energy Efficiency Rating		
	Current	Potential
Very energy efficient - lower running costs		
(92 plus) A		
(81-91) B		
(69-80) C		
(55-68) D		
(39-54) E		
(21-38) F		
(1-20) G		
Not energy efficient - higher running costs		
	77	79
England & Wales	EU Directive 2002/91/EC	



These particulars, whilst believed to be accurate are set out as a general outline only for guidance and do not constitute any part of an offer or contract. Intending purchasers should not rely on them as statements of representation of fact, but must satisfy themselves by inspection or otherwise as to their accuracy. No person in this firm's employment has the authority to make or give any representation or warranty in respect of the property.